

# MPS UNITS

☎ +1 888 818 2814

✉ sales@mabrumarine.com

🌐 www.mabrustore.com

📍 1105 Old Griffin Road  
Dania Beach, FL 33004





“

Keeping an excellent reputation  
is our life time commitment

Alain Mabru  
CEO & Founder

## MABRU POWER SYSTEMS

Mabru Power Systems is a Marine Air Conditioner Designer and Manufacturer since 1986, we specialize on high end private yachts and Military vessels requiring nothing but the best.

We know boat maintenance and repair is an on-going task, and we use only quality materials in the work we do to keep those repairs to a minimum.

## THE NEW STANDARD IN MARINE AIR CONDITIONERS

We're proud to introduce **COPPER FIN** technology to our line of Self-Contained Marine Air Conditioners. Easy to install, Compact, Copper Antimicrobial Evaporator Coils, B30 CuNi Condensers and more.

## SELF CONTAINED

Mabru is the only manufacturer that designs and produces dual-voltage 230V 50/60 HZ air conditioning units. We also carry 115V 60HZ self contained units. All units come with Copper Antimicrobial Evaporators, B30 Condensing Coil, Heat and Cool, Digital Touch Control, High Static Pressure Blowers, Water and Air flow safety sensors and lifetime warranty on compressors.

SC05DC .....	Page 3
SC07DC .....	Page 5
SC12DC .....	Page 7
SC4.2 .....	Page 9
SC07 .....	Page 11
SC12 .....	Page 13
SC17 .....	Page 15

## CHILLER AIR HANDLERS

Copper fin radiators provide better cooling or heating and are much more reliable. All units come with Copper Antimicrobial Coils, Water Valve, Electric Heat, Digital Touch Control, High Static Pressure Blowers, Stainless Steel Base, and two year warranty.

AH7K .....	Page 17
AH10K .....	Page 19
AH12K .....	Page 21
AH18K .....	Page 23
AH24K .....	Page 25

## MORE MABRU PRODUCTS

BATTERIES .....	Page 30
PUMPS .....	Page 31



**MABRU POWER SYSTEMS**

# SC05DC

SELF CONTAINED UNIT

3,500-5,000 BTU - 12V DC



## Quick Facts

- Heat and Cool
- Digital Control
- Copper Antimicrobial Evaporator
- B30 Condensing Coil

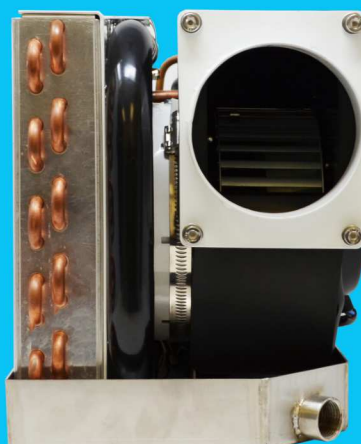
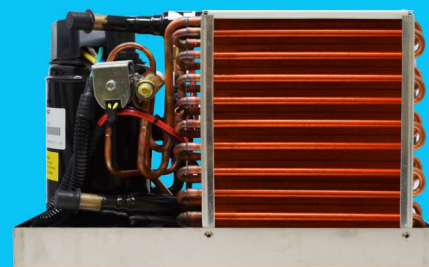


## Warranties

- 2 Year Warranty On The Unit
- 1 Year Warranty On Installation
- Lifetime Warranty On The Compressor

World's only 12V DC heat pump. This unit has a capacity of 3,500-5,000 BTU as well as reverse-cycle heat, it also comes with a high-velocity Blower so you have a marine air conditioning to suit your needs.

- Resists mold and bacteria
- Reduces odor
- Enhanced heat transfer
- Higher Efficiency



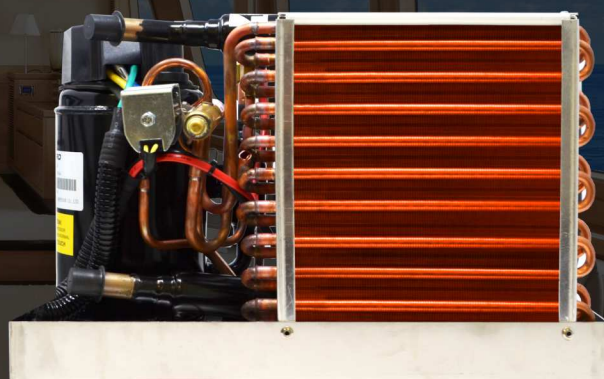
- Copper Antimicrobial Evaporators
- Stainless steel chassis, welded drains
- High static pressure ball bearings blowers with auto mode



## MABRU POWER SYSTEMS

# SC05DC

## SPECIFICATIONS



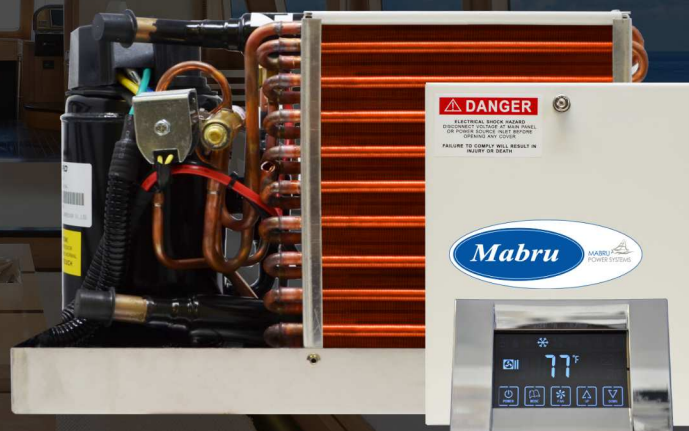
MODEL NUMBER	SC05DC
Cooling Capacity (Btu/h)	3,500-5,000
Heating Capacity (Btu/h)	4,000-5,500
Power Source	12V DC
Cooling Amp Draw	17-27.9
Heating Amp Draw	20-30.2
Fan Blower (CFM H/M/L)	220/180/100
Refrigerant	134a
Minimum Air Duct Size (in)	4
Minimum Return Air Grille Size (sq. in)	64
Minimum Supply Air Grille Size (sq. in)	16
Seawater Pipe (in)	5/8
Net Weight (lbs)	32
Shipping Weight (Lbs)	40
Measurements (W/D/H)	13.8/7.5/9.5

**MABRU POWER SYSTEMS**

# SC07DC

SELF CONTAINED UNIT

6,000-7,200 BTU - 12V DC



## Quick Facts

- Heat and Cool
- Digital Control
- Copper Antimicrobial Evaporator
- B30 Condensing Coil

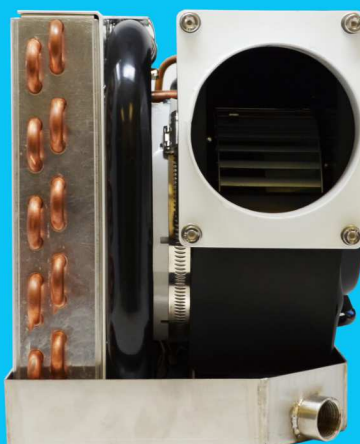
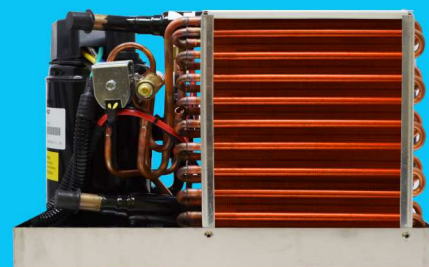


## Warranties

- 2 Year Warranty On The Unit
- 1 Year Warranty On Installation
- Lifetime Warranty On The Compressor

This unit has a capacity of 6,000-7,200 BTU as well as reverse-cycle heat, it also comes with a high-velocity Blower so you have a marine air conditioning to suit your needs.

- Resists mold and bacteria
- Reduces odor
- Enhanced heat transfer
- Higher Efficiency



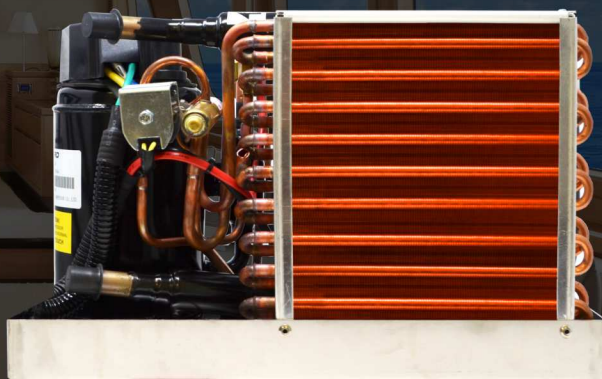
- Copper Antimicrobial Evaporators
- Stainless steel chassis, welded drains
- High static pressure ball bearings blowers with auto mode



**MABRU POWER SYSTEMS**

# SC07DC

## SPECIFICATIONS



MODEL NUMBER	SC07DC
Cooling Capacity (Btu/h)	6,000-7,200
Heating Capacity (Btu/h)	6,000-7,200
Power Source	12V DC
Cooling Amp Draw	22-28
Heating Amp Draw	23-29
Fan Blower (CFM H/M/L)	370/305/210
Refrigerant	134a
Minimum Air Duct Size (in)	4
Minimum Return Air Grille Size (sq. in)	64
Minimum Supply Air Grille Size (sq. in)	16
Seawater Pipe (in)	5/8
Net Weight (lbs)	47
Shipping Weight (Lbs)	56
Measurements (W/D/H)	15.9/9/11.75

**MABRU POWER SYSTEMS**

# SC12DC

SELF CONTAINED UNIT

8,200-12,500 BTU - 12V DC



## Quick Facts

- Heat and Cool
- Digital Control
- Copper Antimicrobial Evaporator
- B30 Condensing Coil



## Warranties

- 2 Year Warranty On The Unit
- 1 Year Warranty On Installation
- Lifetime Warranty On The Compressor

This unit has a capacity of 8,200-12,500 BTU as well as reverse-cycle heat, it also comes with a high-velocity Blower so you have a marine air conditioning to suit your needs.

- Resists mold and bacteria
- Reduces odor
- Enhanced heat transfer
- Higher Efficiency



- Copper Antimicrobial Evaporators
- Stainless steel chassis, welded drains
- High static pressure ball bearings blowers with auto mode



## MABRU POWER SYSTEMS

# SC12DC

## SPECIFICATIONS



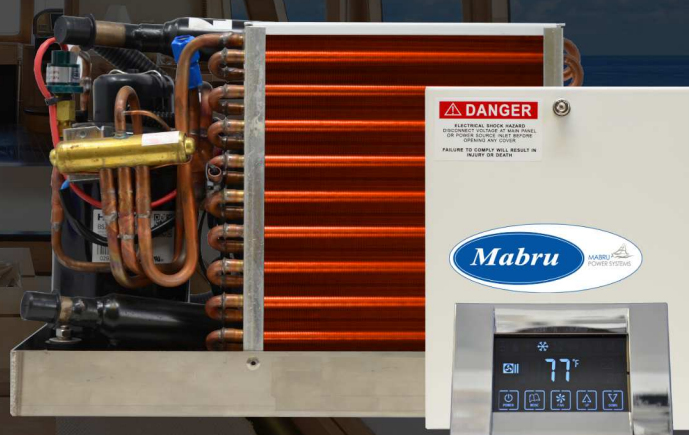
MODEL NUMBER	SC12DC
Cooling Capacity (Btu/h)	8,200-12,500
Heating Capacity (Btu/h)	9,000-12,300
Power Source	12V DC
Cooling Amp Draw	33-44
Heating Amp Draw	35-47
Fan Blower (CFM H/M/L)	525/495/410
Refrigerant	134a
Minimum Air Duct Size (in)	4
Minimum Return Air Grille Size (sq. in)	100
Minimum Supply Air Grille Size (sq. in)	24
Seawater Pipe (in)	5/8
Net Weight (lbs)	59
Shipping Weight (Lbs)	76
Measurements (W/D/H)	18.9/11.2/12.25

**MABRU POWER SYSTEMS**

# SC4.2

SELF CONTAINED UNIT

4,200 BTU - 110V/230V



## Quick Facts

- Heat and Cool
- Digital Control
- Copper Antimicrobial Evaporator
- B30 Condensing Coil

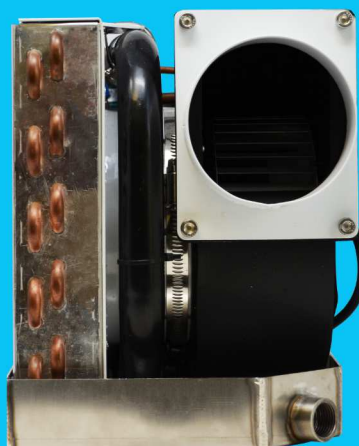
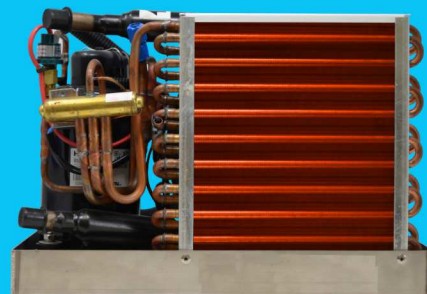


## Warranties

- 2 Year Warranty On The Unit
- 1 Year Warranty On Installation
- Lifetime Warranty On The Compressor

World's Smallest Marine Air Conditioner. This unit has a capacity of 4,200 BTU as well as reverse-cycle heat, it also comes with a high-velocity Blower so you have a marine air conditioning to suit your needs.

- Resists mold and bacteria
- Reduces odor
- Enhanced heat transfer
- Higher Efficiency



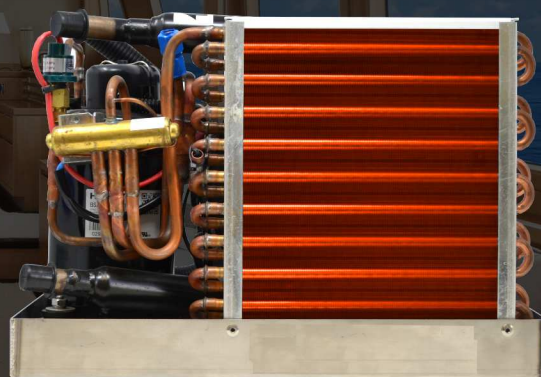
- Copper Antimicrobial Evaporators
- Stainless steel chassis, welded drains
- High static pressure ball bearings blowers with auto mode



## MABRU POWER SYSTEMS

# SC4.2

## SPECIFICATIONS



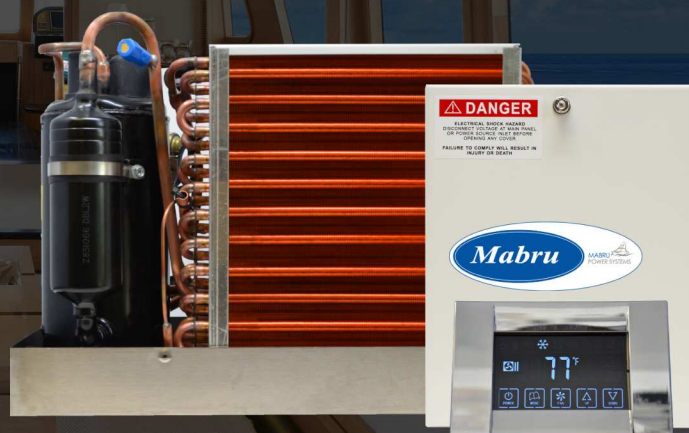
MODEL NUMBER	SC4.2	SC4.2(C)
Cooling Capacity (Btu/h)	4,200	4,200
Heating Capacity (Btu/h)	4,500	4,500
Power Source	115V 60 Hz	230V 50/60 Hz
Cooling Amp Draw	4.6	1.9
Heating Amp Draw	5	2.2
Fan Blower (CFM H/M/L)	250/200/100	250/200/100
Refrigerant	134a	134a
Minimum Air Duct Size (in)	4	4
Minimum Return Air Grille Size (sq. in)	64	64
Minimum Supply Air Grille Size (sq. in)	16	16
Seawater Pipe (in)	5/8	5/8
Net Weight (lbs)	30	30
Shipping Weight (Lbs)	36	36
Measurements (W/D/H)	13.8/7.5/9.5	13.8/7.5/9.5

## MABRU POWER SYSTEMS

# SC07

SELF CONTAINED UNIT

7,000 BTU - 110V/230V



## Quick Facts

- Heat and Cool
- Digital Control
- Copper Antimicrobial Evaporator
- B30 Condensing Coil



## Warranties

- 2 Year Warranty On The Unit
- 1 Year Warranty On Installation
- Lifetime Warranty On The Compressor

This unit has a capacity of 7,000 BTU as well as reverse-cycle heat, it also comes with a high-velocity Blower so you have a marine air conditioning to suit your needs.

- Resists mold and bacteria
- Reduces odor
- Enhanced heat transfer
- Higher Efficiency



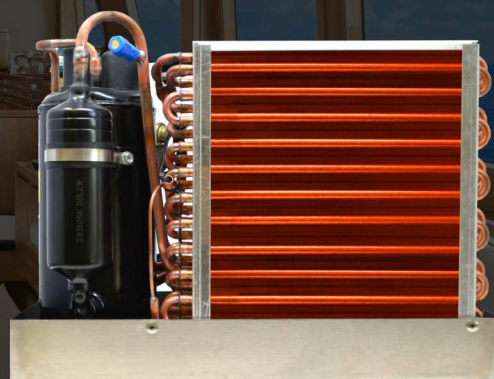
- Copper Antimicrobial Evaporators
- Stainless steel chassis, welded drains
- High static pressure ball bearings blowers with auto mode



## MABRU POWER SYSTEMS

# SC07

## SPECIFICATIONS



MODEL NUMBER	SC07DC	SC07	SC07(C)
Cooling Capacity (Btu/h)	6,000-7,200	7,000	7,000
Heating Capacity (Btu/h)	6,000-7,200	7,500	7,500
Power Source	12V DC	115V 60Hz	230V 50/60hz
Cooling Amp Draw	22-28	5.2	3.2
Heating Amp Draw	23-29	5.8	4.1
Fan Blower (CFM H/M/L)	370/305/210	380/305/210	380/305/210
Refrigerant	134a	410a	410a
Minimum Air Duct Size (in)	4	4	5
Minimum Return Air Grille Size (sq. in)	64	100	100
Minimum Supply Air Grille Size (sq. in)	16	20	20
Seawater Pipe (in)	5/8	5/8	5/8
Net Weight (lbs)	47	47	47
Shipping Weight (Lbs)	56	55	58
Measurements (W/D/H)	15.9/9/11.75	15.9/9.4/11.75	15.9/9.4/11.75

**MABRU POWER SYSTEMS**

# SC12

SELF CONTAINED UNIT

12,000 BTU - 110V/230V



## Quick Facts

- Heat and Cool
- Digital Control
- Copper Antimicrobial Evaporator
- B30 Condensing Coil



## Warranties

- 2 Year Warranty On The Unit
- 1 Year Warranty On Installation
- Lifetime Warranty On The Compressor

This unit has a capacity of 12,000 BTU as well as reverse-cycle heat, it also comes with a high-velocity Blower so you have a marine air conditioning to suit your needs.

- Resists mold and bacteria
- Reduces odor
- Enhanced heat transfer
- Higher Efficiency



- Copper Antimicrobial Evaporators
- Stainless steel chassis, welded drains
- High static pressure ball bearings blowers with auto mode



## MABRU POWER SYSTEMS

# SC12

## SPECIFICATIONS



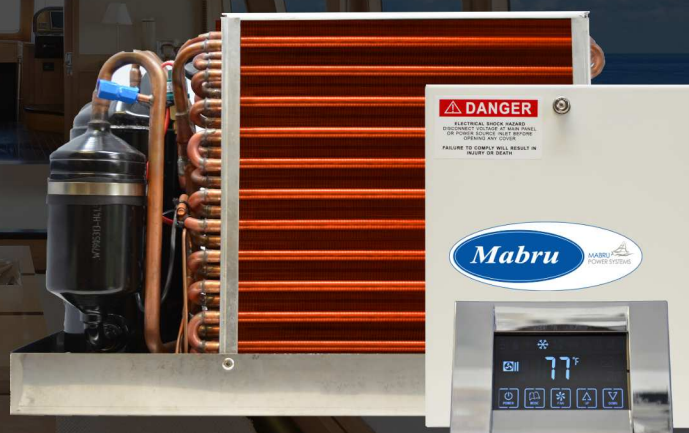
MODEL NUMBER	SC12DC	SC12	SC12(C)
Cooling Capacity (Btu/h)	8,200-12,500	12,000	12,000
Heating Capacity (Btu/h)	9,000-12,300	13,500	13,500
Power Source	12V DC	115V 60 Hz	230V 50/60 Hz
Cooling Amp Draw	33-44	9	4.5
Heating Amp Draw	35-47	11.5	5.5
Fan Blower (CFM H/M/L)	525/495/410	580/495/410	580/495/410
Refrigerant	134a	410a	410a
Minimum Air Duct Size (in)	4	5	5
Minimum Return Air Grille Size (sq. in)	100	120	120
Minimum Supply Air Grille Size (sq. in)	24	32	32
Seawater Pipe (in)	5/8	5/8	5/8
Net Weight (lbs)	59	59	40
Shipping Weight (Lbs)	76	75	76
Measurements (W/D/H)	18.9/11.2/12.25	18.9/11.2/12.25	18.9/11.2/12.25

## MABRU POWER SYSTEMS

# SC17

SELF CONTAINED UNIT

17,000 BTU - 110V/230V



## Quick Facts

- Best In Class
- Heat and Cool
- Digital Control
- Copper Antimicrobial Evaporator
- B30 Condensing Coil

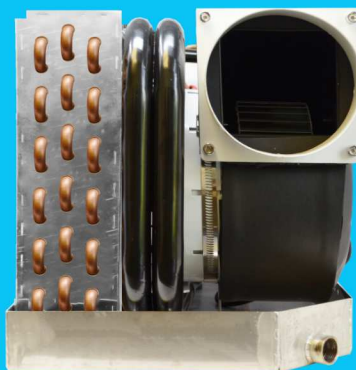
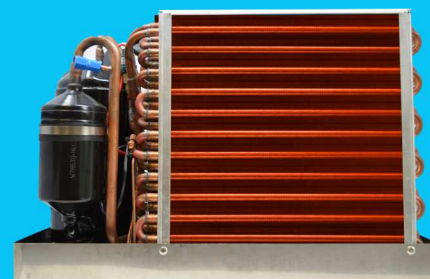


## Warranties

- 2 Year Warranty On The Unit
- 1 Year Warranty On Installation
- Lifetime Warranty On The Compressor

Best In Class Self Contained Unit. This unit has a capacity of 17,000 BTU as well as reverse-cycle heat, it also comes with a high-velocity Blower so you have a marine air conditioning to suit your needs.

- Resists mold and bacteria
- Reduces odor
- Enhanced heat transfer
- Higher Efficiency



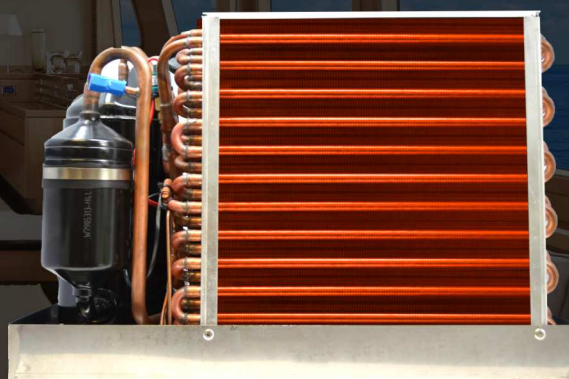
- Copper Antimicrobial Evaporators
- Stainless steel chassis, welded drains
- High static pressure ball bearings blowers with auto mode



## MABRU POWER SYSTEMS

# SC17

## SPECIFICATIONS



MODEL NUMBER	SC17	SC17(C)
Cooling Capacity (Btu/h)	17,000	17,000
Heating Capacity (Btu/h)	17,600	17,600
Power Source	115V 60 Hz	230V 50/60 Hz
Cooling Amp Draw	10	5.2
Heating Amp Draw	11.5	5.8
Fan Blower (CFM H/M/L)	730/610/520	730/610/520
Refrigerant	410a	410a
Minimum Air Duct Size (in)	6	6
Minimum Return Air Grille Size (sq. in)	144	144
Minimum Supply Air Grille Size (sq. in)	40	40
Seawater Pipe (in)	5/8	5/8
Net Weight (lbs)	68	68
Shipping Weight (Lbs)	85	84
Measurements (W/D/H)	19.6/12.25/13	19.6/12.25/13

**MABRU POWER SYSTEMS**

# AH7K

CHILLED WATER AIR HANDLER  
7,000 BTU - 230V



## Quick Facts

- Digital Control
- Heat and Cool
- Copper Antimicrobial Evaporator

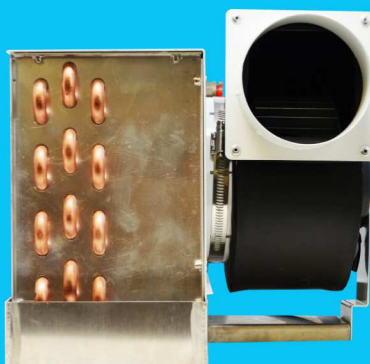


## Warranties

- 2 Year Warranty On The Unit
- 1 Year Warranty On Installation

7,000 BTU - 230V at 50/60 HZ. Includes a Stainless Chassis, Copper Antimicrobial Evaporator, Standard Digital Control and more.

- Resists mold and bacteria
- Reduces odor
- Enhanced heat transfer
- Higher Efficiency



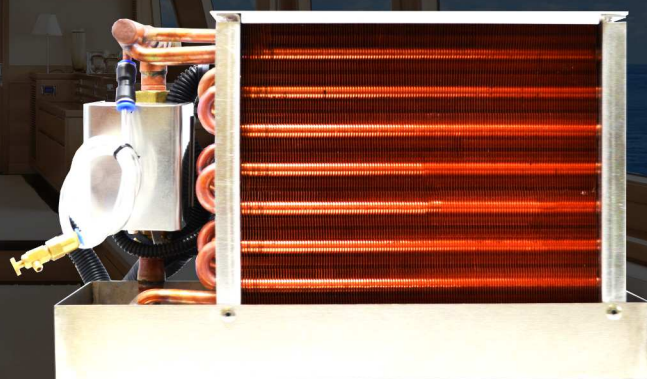
- Copper Antimicrobial Evaporators
- Stainless steel chassis, welded drains
- High static pressure ball bearings blowers with auto mode



**MABRU POWER SYSTEMS**

# AH7K

## SPECIFICATIONS



MODEL NUMBER	AH7K
Cooling Capacity (Btu/h)	7,000
Heating Capacity (Btu/h)	7,000
Power Source	230V 50/60 Hz
Cooling Amp Draw	0.3
Heating Amp Draw	2.5
Fan Blower (CFM H/M/L)	380/305/210
Refrigerant	n/a
Minimum Air Duct Size (in)	4
Minimum Return Air Grille Size (sq. in)	100
Minimum Supply Air Grille Size (sq. in)	20
Seawater Pipe (in)	1/2
Pipe size (npt, in)	1/2
Net Weight (lbs)	24
Measurements (W/D/H)	15/11.5/10.75

**MABRU POWER SYSTEMS**

# AH10K

CHILLED WATER AIR HANDLER

10,000 BTU - 230V



## Quick Facts

- Digital Control
- Heat and Cool
- Copper Antimicrobial Evaporator

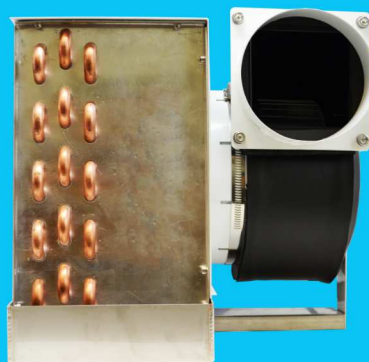


## Warranties

- 2 Year Warranty On The Unit
- 1 Year Warranty On Installation

10,000 BTU - 230V at 50/60 HZ. Includes a Stainless Chassis, Copper Antimicrobial Evaporator, Standard Digital Control and more.

- Resists mold and bacteria
- Reduces odor
- Enhanced heat transfer
- Higher Efficiency



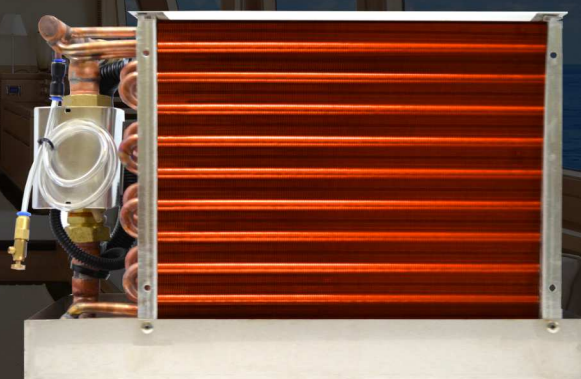
- Copper Antimicrobial Evaporators
- Stainless steel chassis, welded drains
- High static pressure ball bearings blowers with auto mode



## MABRU POWER SYSTEMS

# AH10K

## SPECIFICATIONS



MODEL NUMBER	AH10K
Cooling Capacity (Btu/h)	10,000
Heating Capacity (Btu/h)	10,000
Power Source	230V 50/60 Hz
Cooling Amp Draw	0.9
Heating Amp Draw	5.2
Fan Blower (CFM H/M/L)	400/380/300
Refrigerant	n/a
Minimum Air Duct Size (in)	5
Minimum Return Air Grille Size (sq. in)	120
Minimum Supply Air Grille Size (sq. in)	32
Seawater Pipe (in)	3/4
Pipe size (npt, in)	3/4
Net Weight (lbs)	22
Measurements (W/D/H)	17.5/13/12.25

**MABRU POWER SYSTEMS**

# AH12K

CHILLED WATER AIR HANDLER

12,000 BTU - 230V



## Quick Facts

- Digital Control
- Heat and Cool
- Copper Antimicrobial Evaporator

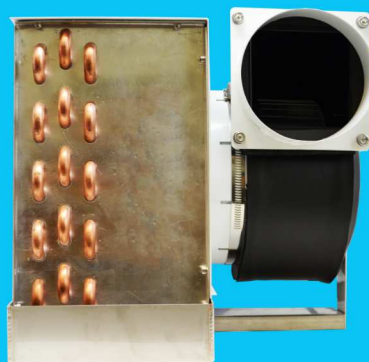


## Warranties

- 2 Year Warranty On The Unit
- 1 Year Warranty On Installation

12,000 BTU - 230V at 50/60 HZ. Includes a Stainless Chassis, Copper Antimicrobial Evaporator, Standard Digital Control and more.

- Resists mold and bacteria
- Reduces odor
- Enhanced heat transfer
- Higher Efficiency



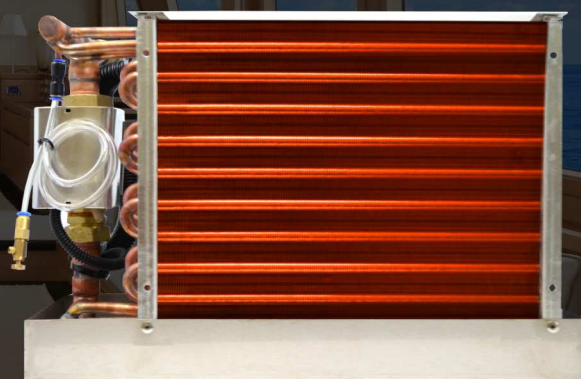
- Copper Antimicrobial Evaporators
- Stainless steel chassis, welded drains
- High static pressure ball bearings blowers with auto mode



## MABRU POWER SYSTEMS

# AH12K

## SPECIFICATIONS



MODEL NUMBER	AH12K
Cooling Capacity (Btu/h)	12,000
Heating Capacity (Btu/h)	12,000
Power Source	230V 50/60 Hz
Cooling Amp Draw	1
Heating Amp Draw	9.7
Fan Blower (CFM H/M/L)	580/495/410
Refrigerant	n/a
Minimum Air Duct Size (in)	5
Minimum Return Air Grille Size (sq. in)	120
Minimum Supply Air Grille Size (sq. in)	32
Seawater Pipe (in)	3/4
Pipe size (npt, in)	3/4
Net Weight (lbs)	28
Measurements (W/D/H)	17.5/13/12.25

**MABRU POWER SYSTEMS**

# AH18K

CHILLED WATER AIR HANDLER  
18,000 BTU - 230V



## Quick Facts

- Digital Control
- Heat and Cool
- Copper Antimicrobial Evaporator

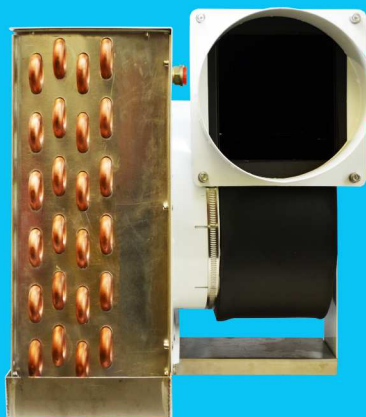


## Warranties

- 2 Year Warranty On The Unit
- 1 Year Warranty On Installation

18,000 BTU - 230V at 50/60 HZ. Includes a Stainless Chassis, Copper Antimicrobial Evaporator, Standard Digital Control and more.

- Resists mold and bacteria
- Reduces odor
- Enhanced heat transfer
- Higher Efficiency



- Copper Antimicrobial Evaporators
- Stainless steel chassis, welded drains
- High static pressure ball bearings blowers with auto mode



**MABRU POWER SYSTEMS**

# AH18K

## SPECIFICATIONS



MODEL NUMBER	AH18K
Cooling Capacity (Btu/h)	18,000
Heating Capacity (Btu/h)	18,000
Power Source	230V 50/60 Hz
Cooling Amp Draw	1.1
Heating Amp Draw	9.8
Fan Blower (CFM H/M/L)	730/610/520
Refrigerant	n/a
Minimum Air Duct Size (in)	6
Minimum Return Air Grille Size (sq. in)	144
Minimum Supply Air Grille Size (sq. in)	40
Seawater Pipe (in)	3/4
Pipe size (npt, in)	3/4
Net Weight (lbs)	35
Measurements (W/D/H)	19.75/13.75/14.25

**MABRU POWER SYSTEMS**

# AH24K

CHILLED WATER AIR HANDLER

24,000 BTU - 230V



## Quick Facts

- Best In Class
- Digital Control
- Heat and Cool
- Copper Antimicrobial evaporator

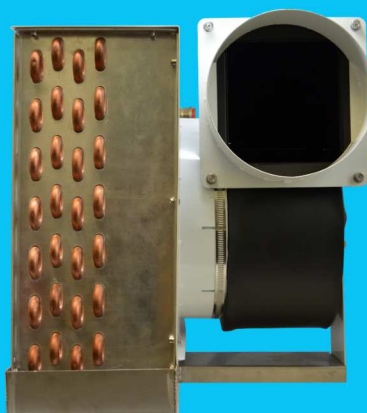
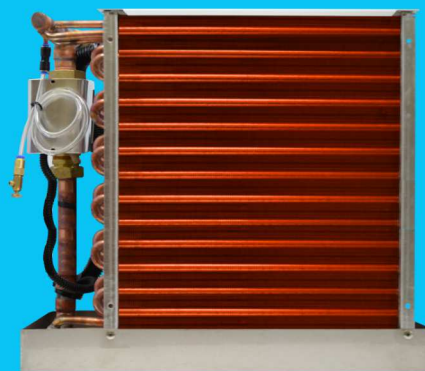


## Warranties

- 2 Year Warranty On The Unit
- 1 Year Warranty On Installation

Best In Class Air Handler. 24,000 BTU - 230V at 50/60 HZ. Includes a Stainless Chassis, Copper Antimicrobial Evaporator, Standard Digital Control and more.

- Resists mold and bacteria
- Reduces odor
- Enhanced heat transfer
- Higher Efficiency



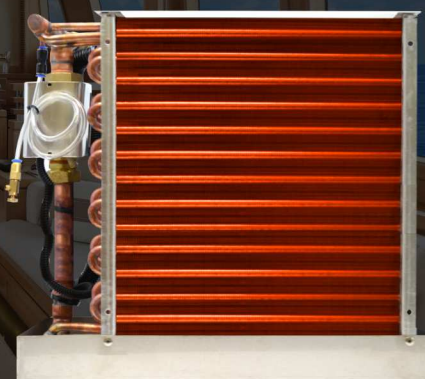
- Copper Antimicrobial Evaporators
- Stainless steel chassis, welded drains
- High static pressure ball bearings blowers with auto mode



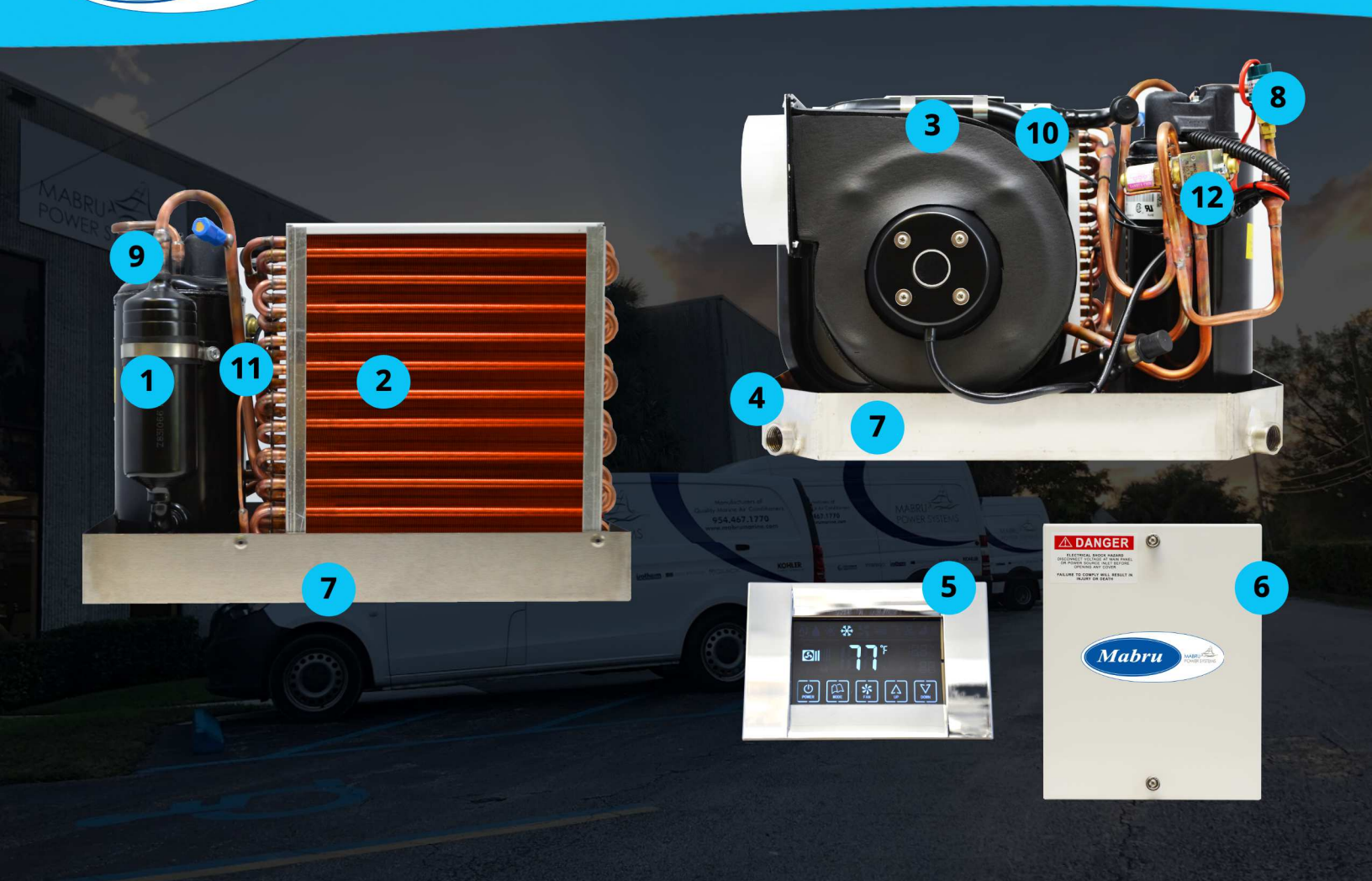
**MABRU POWER SYSTEMS**

# AH24K

## SPECIFICATIONS



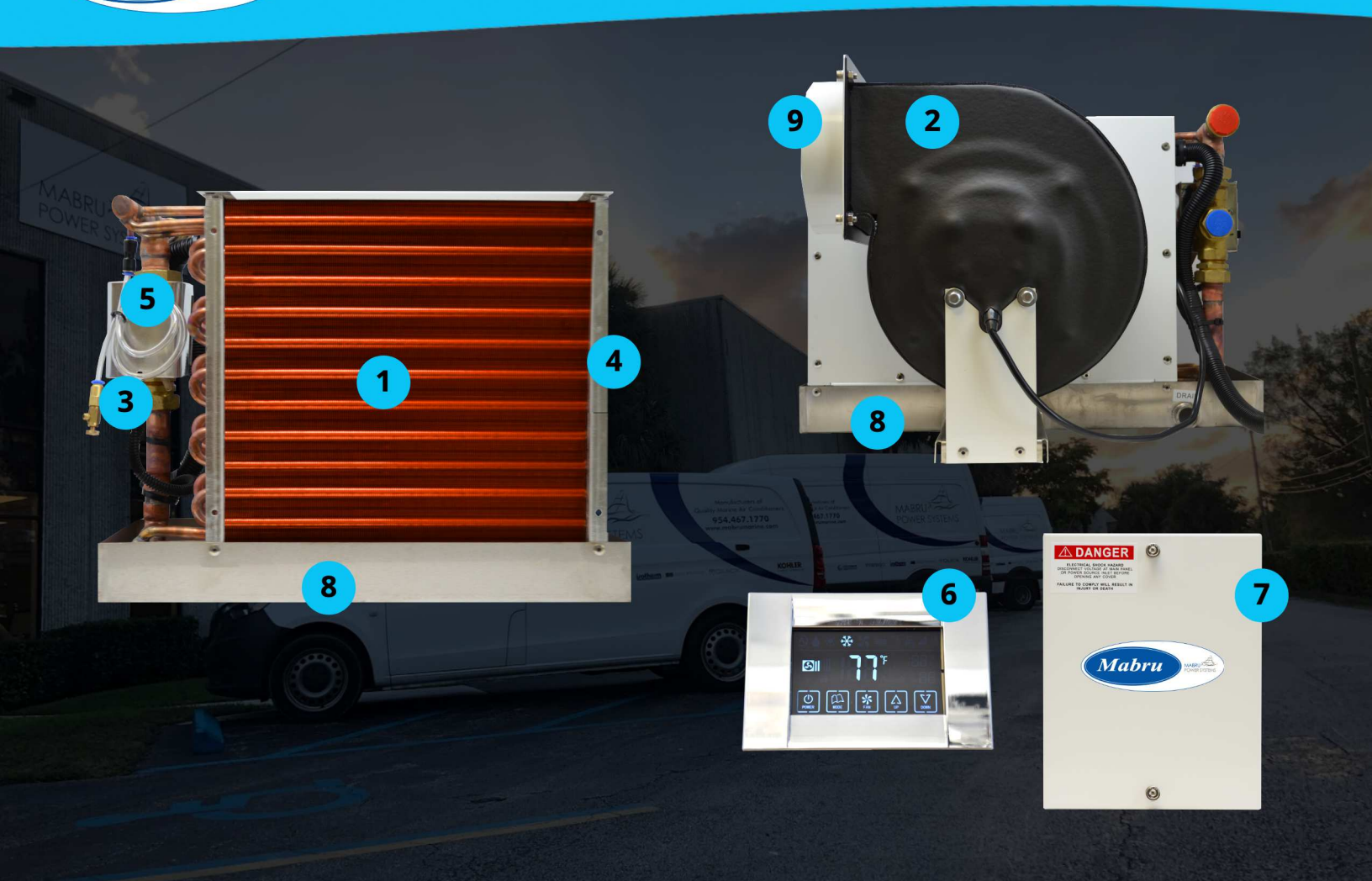
MODEL NUMBER	AH24K
Cooling Capacity (Btu/h)	24,000
Heating Capacity (Btu/h)	24,000
Power Source	230V 50/60 Hz
Cooling Amp Draw	1.8
Heating Amp Draw	14.8
Fan Blower (CFM H/M/L)	830/710/620
Refrigerant	n/a
Minimum Air Duct Size (in)	7
Minimum Return Air Grille Size (sq. in)	180
Minimum Supply Air Grille Size (sq. in)	50
Seawater Pipe (in)	3/4
Pipe size (npt, in)	3/4
Net Weight (lbs)	40
Measurements (W/D/H)	22/15/16.75



## SELF CONTAINED FEATURES (SC-07)

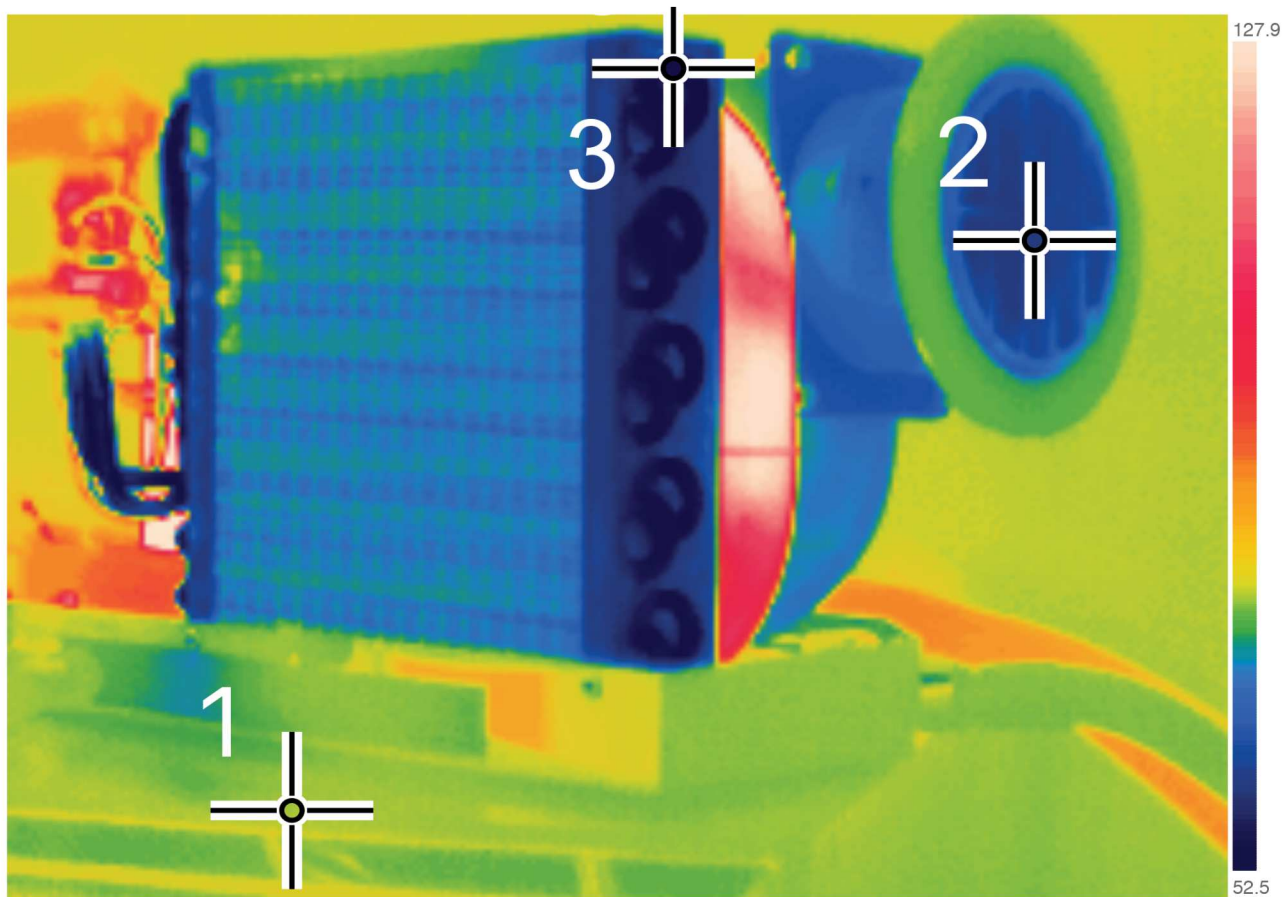
- 1** High Efficiency Compressor with reduced noise technology.
- 2** Copper Antimicrobial Evaporators
- 3** Rotatable High Static Pressure Ball-bearing Blower
- 4** Low Profile Drain Plug
- 5** Digital Touch Controller
- 6** Remotely mounted electrical box for easy wiring, servicing and installation
- 7** Stainless-steel chassis. Remains 'like new' for the lifetime of the unit.
- 8** Water Flow Sensor
- 9** Flex duct attachment collar is standard on each unit
- 10** Military Grade B30 CuNi Water Condenser
- 11** Anti-Freeze Sensor
- 12** Reversing Valve





## AIR HANDLER FEATURES (AH-18K)

- 1** Copper Antimicrobial Evaporators
- 2** Rotatable High Static Pressure Ball-bearing Blower
- 3** Remote Flexible Tubing Air Bleeder
- 4** Electric Heat Capable
- 5** Water Valve
- 6** Digital Touch Controller
- 7** Remotely mounted electrical box for easy wiring, servicing and installation
- 8** Stainless-steel chassis. Remains 'like new' for the lifetime of the unit.
- 9** Flex duct attachment collar is standard on each unit



## OPERATING TEMPERATURES

Mabru Self Contained SC4.2 - 4,200 BTU unit testing:

The unit is running off 115V with a 250GPH micro pump.

The blower is set to full speed for testing, putting out 300CFM

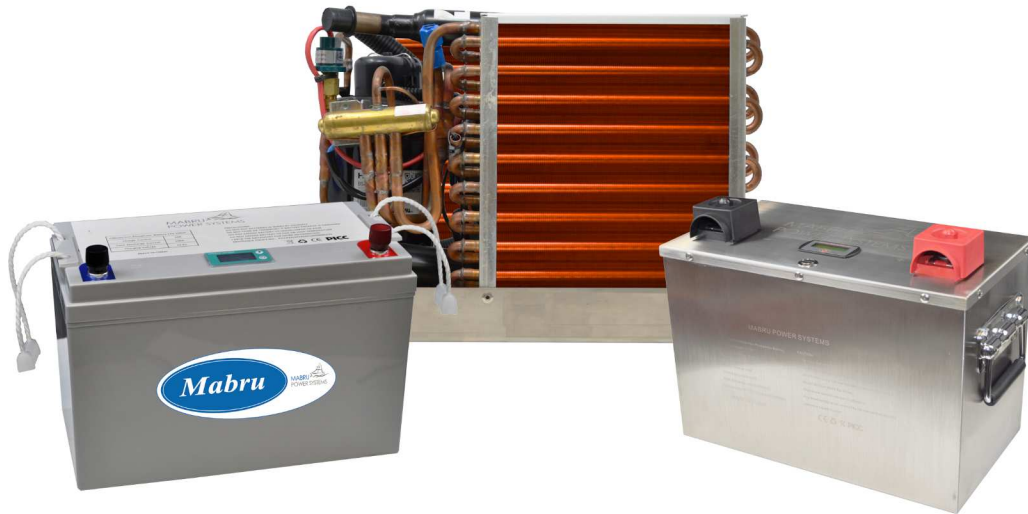
Spot 1 shows an ambient temperature of 81°F

Spot 2 shows a discharge temperature of 62.9°F

Spot 3 shows an evaporator coil temperature of 51.8°F



## BATTERIES



Our batteries provide over 5x the cycle life at 80% DOD (depth of discharge) compared to standard lead-acid batteries, and easily handles 2,000 cycles. Our batteries use Lithium Iron Phosphate which is the safest form of lithium chemistry. MPS lithium batteries are the ultimate clean energy. Three Years Limited Warranty, see our website for details.

	12V/125 AH	12V/250AH	12V/125AH M	12V/250H M
Charge Current Maximun	50 A	100 A	100 A	150 A
Peak Discharge (3s)	200 A	350 A	300 A	750 A
BMS Reset	Automatic	Automatic	Manual	Manual
Cont. Discharge Current	100 A	200 A	125	250
Charging Voltage	14.6V	14.6 V	14.6V	14.6 V
Measurements (D/W/H)	6.81/13/8.43	11/20.7/10	7/12.25/10	10.75/12.75/10.5
Net Weight (Lbs)	31	59	35	56
Shipping Weight (Lbs)	41	67	45	76
Display	Yes	Yes	Yes	Yes
Handles	Yes	Yes	Yes	Yes
Battery Management System (BMS)	Yes	Yes	Yes	Yes
Bolt Set Included	Yes	Yes	Yes	Yes
Chemistry	LiFePO4	LiFePO4	LiFePO4	LiFePO4

## PUMPS



Our marine air conditioning raw water pumps are small, efficient, quiet and extremely reliable. Our pumps are significantly smaller than our competitors' which allows for much easier installations in confined bilge spaces. We utilize permanent magnet, brushless DC motors coupled with magnetic drive, non friction impellers to maximize efficiency and durability. All of our pumps are fully submersible and ignition protected.

	250	650	950	1250
Voltage/Hz	110/220VAC / 12/24VDC	110/220VAC / 12/24VDC	110/220VAC / 12/24VDC	110/220VAC / 12/24VDC
Amps @ 24VDC	0.75	1	1.4	1.5
Waterproof	Yes	Yes	Yes	Yes
Max Head Ft. H2O	10 in	22 in	38 in	35 in
GPH	250	650	950	1250
Inlet Size (in)	1/2	1/2	3/4	1
Outlet Size (in)	1/2	1/2	3/4	1
Height (in/mm)	1.73 in / 44 mm	3.74 in / 95 mm	5.19 in / 132 mm	5.51 in / 140 mm
Width (in/mm)	3.3 in / 84 mm	2.76 in / 70 mm	3.93 in / 100 mm	4.33 in / 110 mm
Length (in/mm)	3.35 in / 85 mm	4.01 in / 102 mm	5.70 in / 145 mm	7.67 in / 195 mm
Weight (lbs/kg)	0.5 lbs / 1.1 kg	1.55 lbs / 3.41 kg	2.5 lbs / 5.5 kg	4.50 lbs / 9.9 kg





# **The Authority In Marine Air Conditioning**

**+1 888 818 2814**  
**[sales@mabrumarine.com](mailto:sales@mabrumarine.com)**  
**[www.mabrustore.com](http://www.mabrustore.com)**  
**1105 Old Griffin Road**  
**Dania Beach, FL 33004**